



Staff & HQ Report

Feb 2026

v3

STANDARDS

CONNECT - COLLABORATE. - INNOVATE. - GROW. - PROSPER

SEMI Global 2026 Calendar of Events

Event Name	Event Details
SEMICON[®] KOREA	Feb 11-13 Seoul, Korea
SEMICON[®] CHINA	March 25-27 Shanghai, China
SEMIEXPO HEARTLAND	April 29-30 Detroit, Michigan
SEMICON[®] SOUTHEAST ASIA	May 05-07 Kuala Lumpur, Malaysia
SEMICON[®] TAIWAN	Sept 2-4 Taipei
SEMICON[®] INDIA	Sept 17-19 New Delhi

SEMICON West 2026-2030

- 2026—October 13-15 | Moscone Center | San Francisco, CA
- **2027—October 12-14 | Phoenix Convention Center | Phoenix, AZ**
- 2028—October 10-12 | Moscone Center | San Francisco, CA
- **2029—October 9-11 | Phoenix Convention Center | Phoenix, AZ**
- 2030—October 29-31 | Moscone Center | San Francisco, CA

Upcoming NA Meetings 2026

Event Name	Date/Venue
NA Winter Meeting	Feb 09-12 (Full Virtual)
NA Spring Meeting <i>(In conjunction with ASMC)</i>	May 11-14 Hilton Albany, New York
SEMICON West Meeting	October 12-15 San Francisco, California/USA

ASMC Meeting Registration & Sponsorship

- Registration
 - Standards Meetings Registration
 - https://bit.ly/Standards_ASMC_2026
 - Hotel Reservation
 - Hotel Link: <https://www.hilton.com/en/attend-my-event/asmc-conference-may-2026/>
 - Call 1(800) Hiltons reservation line and provide the code **“4ASMC”**
 - Deadline: Tuesday, April 21
- Sponsorship needed
 - Event Logistic (e.g., Catering, Coffee breaks, AV)
 - Please contact staff for more info.

SEMI Advanced Semiconductor Manufacturing Conference (ASMC)



- About ASMC
 - SEMI's international technical conference for discussing solutions that improve the collective manufacturing expertise of the semiconductor industry.
 - Provides a platform for semiconductor professionals to network and learn the latest in the practical application of advanced manufacturing strategies and methodologies.
- ASMC 2026: May 11-14 | Hilton Albany | Albany, NY
- Technical Sessions:

<ul style="list-style-type: none"> ➤ Advanced Equipment Processes and Materials ➤ Advanced Metrology ➤ Advanced Patterning ➤ Advanced Process Control ➤ Big Data Management and Machine Learning ➤ Contamination Free Manufacturing 	<ul style="list-style-type: none"> ➤ Defect Inspection and Reduction ➤ Equipment Optimization ➤ Factory Optimization ➤ Smart Manufacturing ➤ Wafer Level Packaging & Novel Devices ➤ Yield Enhancement / Yield Methodologies
---	--



SEMI Advanced Semiconductor Manufacturing Conference (ASMC)

- View 2025 Agenda:



ASMC

ADVANCED SEMICONDUCTOR MANUFACTURING CONFERENCE

MAY 5-8, 2025 | HILTON ALBANY, ALBANY, NY

WELCOME RECEPTION

Monday, May 5
6:00-7:00pm

axcelis

POSTER SESSION/RECEPTION

Tuesday, May 6
5:30-7:30pm

semi

WI-FI ACCESS

Sponsored by

Rigaku

WI-FI CONNECTION: H1HONORS or atwifi
PASSWORD: asmcRIGAKU

ASMC MOBILE APP ACCESS

KLA

Registered email required
No login
Proceedings available here
at the end of the conference

THANK YOU TO OUR SPONSORS

ASMC

ADVANCED SEMICONDUCTOR MANUFACTURING CONFERENCE

MAY 5-8, 2025 | HILTON ALBANY, ALBANY, NY

WELCOME RECEPTION

Monday, May 5
6:00-7:00pm

axcelis

POSTER SESSION/RECEPTION

Tuesday, May 6
5:30-7:30pm

semi

WI-FI ACCESS

Sponsored by

Rigaku

WI-FI CONNECTION: H1HONORS or atwifi
PASSWORD: asmcRIGAKU

ASMC MOBILE APP ACCESS

KLA

Registered email required
No login
Proceedings available here
at the end of the conference

THANK YOU TO OUR SPONSORS

**SEMICON®
JAPAN**

2025 SEMI Standards Meetings & Events

Date	Dec 17 - 19, 2025 (49 th since 1977)	
Venue	East Hall 4-6, West Hall, South Hall, Conference Tower, Tokyo Big Sight	
Organizer	SEMI	
Event theme	AI x Sustainability x Semiconductor	

Results	(2024 results)	
- Exhibitors	1,216	(1,107)
- Booths	2,900	(2,789)
- Exhibit Area (sqm)	24,735	(24,093)
- Country/Region	35	(35)
- Cumulative Attendance	121,267	(103,165)
- Verified Visitors	55,380	(45,698)

- SEMI Standards hosted the below Technical Committees + many Task Forces:

Compound Semiconductor Materials/ Information & Control/ Metrics/
Physical Interfaces & Carriers/ Silicon Wafer/ Traceability

- Technology Sessions Related to Standardization were held including:

Cybersecurity Forum

Wednesday, December 17 | 9:30 - 11:00
605-606, Conference Tower, Tokyo Big Sight

SATAS Program Summit

Transformation of The Semiconductor Back-End Process!

The World of Fully Automated Back-End Processing that SATAS Aims For

Wednesday, December 17 | 13:30 - 15:00
605-606, Conference Tower, Tokyo Big Sight

Smart Manufacturing: The Next Frontier

Smarter Factory for Solving Semiconductor Fab Operation Challenges

Friday, December 19 | 09:30 - 11:00
102, Conference Tower, Tokyo Big Sight

Critical Dates for SEMI Standards Ballots 2026

2026	Ballot Submission Deadline	Voting Opens	Voting Closes
Cycle 2	January 23	February 11	March 13
Cycle 3	March 5	March 18	April 17
Cycle 4	March 16	March 25	April 24
Cycle 5	May 22	June 2	July 2
Cycle 6	June 19	July 8	August 7
Cycle 7	July 31	August 19	September 18
Cycle 8	September 3	September 23	October 23
Cycle 9	October 1	October 21	November 20

SEMI Standards Publications

- Total SEMI Standards in portfolio: 1,108
 - Includes 374 Inactive Standards

Cycle	New	Revised	Reapproved	Withdrawn
October 2025	0	2	3	0
November 2025	1	7	5	0
December 2025	0	9	0	0

SEMI Standards Publications

14 New SEMI Standards Published in 2025

- SEMI E192 – Guide for Equipment Adoption Criteria for GEM and GEM-related Standards
- SEMI D87 – Test Method for Response Time Evaluation of Displays with Variable Refresh Rate
- SEMI PV102 – Guide for Tube PECVD Graphite Boat Materials for Solar Cell Production
- SEMI F122 – Guide for Facilities Data Package for Manufacturing Equipment Installation and Building Information Modeling
- SEMI D88 – Specification for Electrostatic Properties of FPD Photomasks and Blanks Package
- SEMI MS15 – Guide to MEMS Manufacturing Readiness Levels
- SEMI E193 – Specification for 300 mm Film Frame FOUP (FFF)
- SEMI M94 – Specification for Silicon Carbide Engineered Substrates
- SEMI E194 – Guide to Using a Liquid Particle Counter to Assess Particulate Surface Contamination on Critical Chamber Components and Coupons
- SEMI E195 – Test Method Using Adhesive Replacement Substrates to Assess Particulate Surface Contamination on Critical Chamber Components
- SEMI E196 – Guide for Equipment Edge Data Governance
- SEMI M95 – Test Method for Net Carrier Density and Resistivity of Silicon Epitaxial Layer by Capacitance–Voltage Measurements with an Evaporated Metal Schottky Diode
- SEMI T26 – Specification for Electronic Supply Chain Traceability Using Distributed Ledger Technology
- SEMI T27 – Specification for Traceability Identification Label of Component Parts

Regulations & Procedure Manual

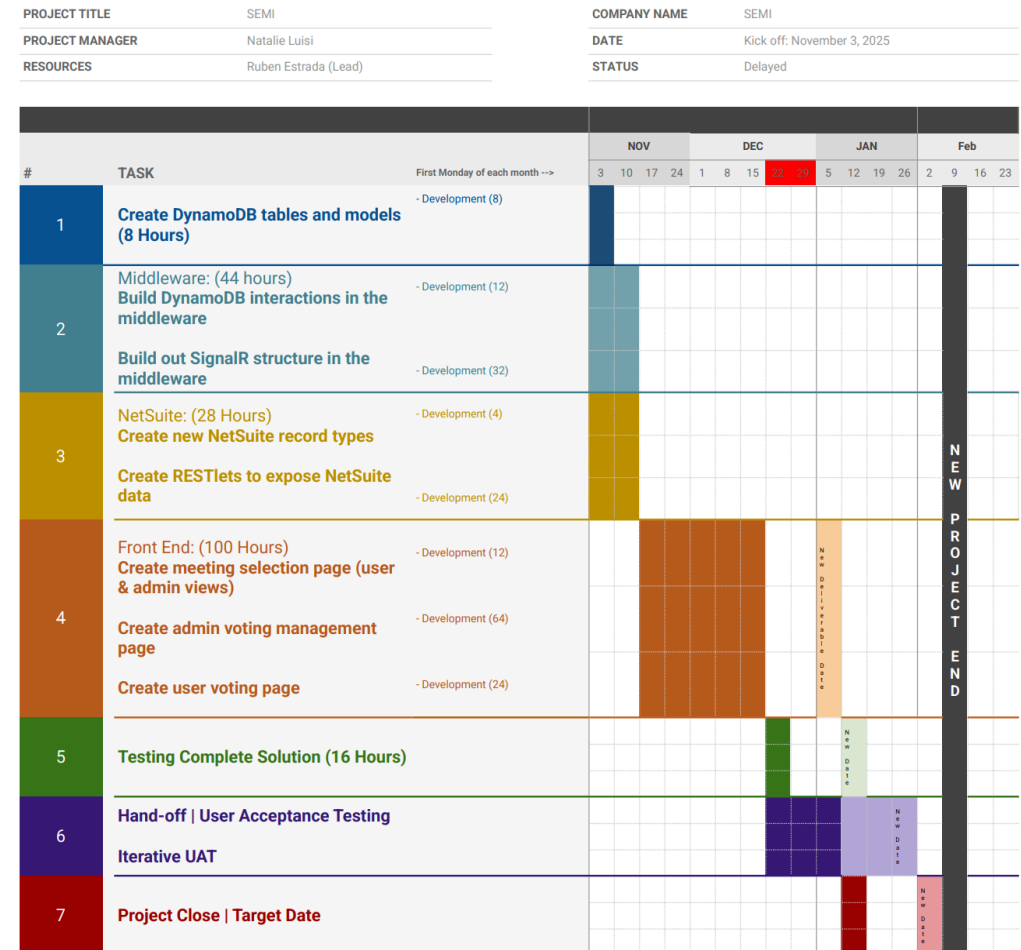
Available at www.semi.org/standards (under Tools for Developing Standards) or direct link below

- Regulations (Feb 20, 2024)
 - <https://www.semi.org/sites/semi.org/files/2024-02/Standards%20Regulations%20February%2020%202024.pdf>
- Procedure Manual (July 7, 2025)
 - <https://www.semi.org/sites/semi.org/files/2025-07/Procedure%20Manual%20July%2007%2C%202025%20v1.pdf>

SEMI IT - China SVM Issue

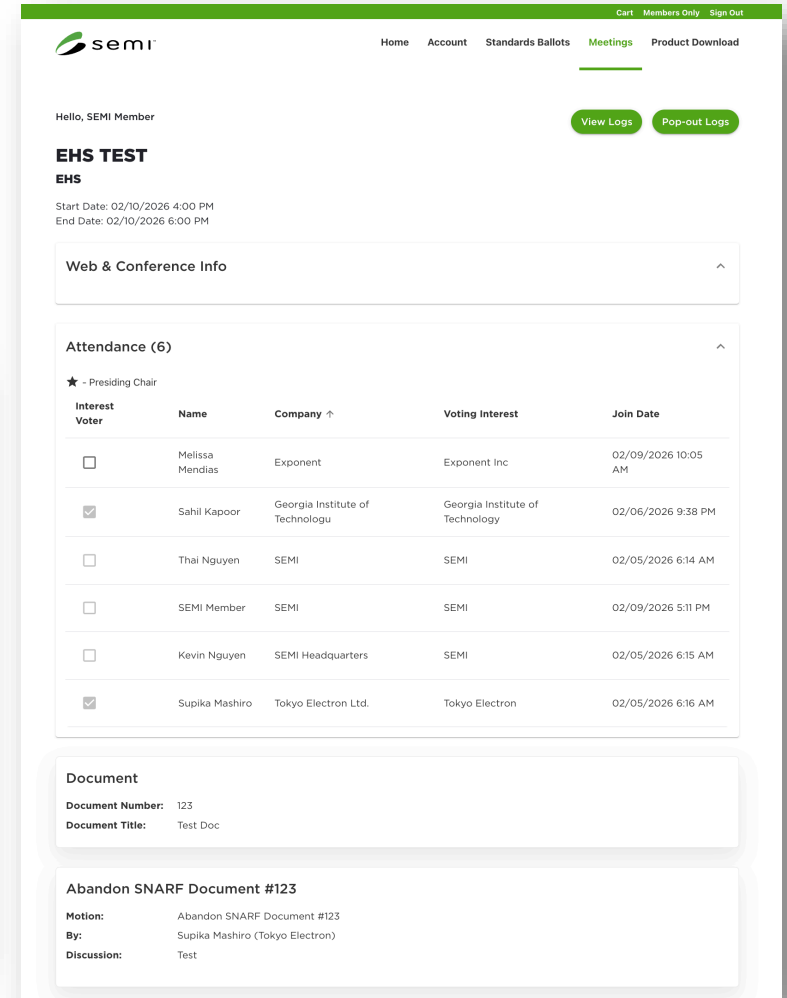
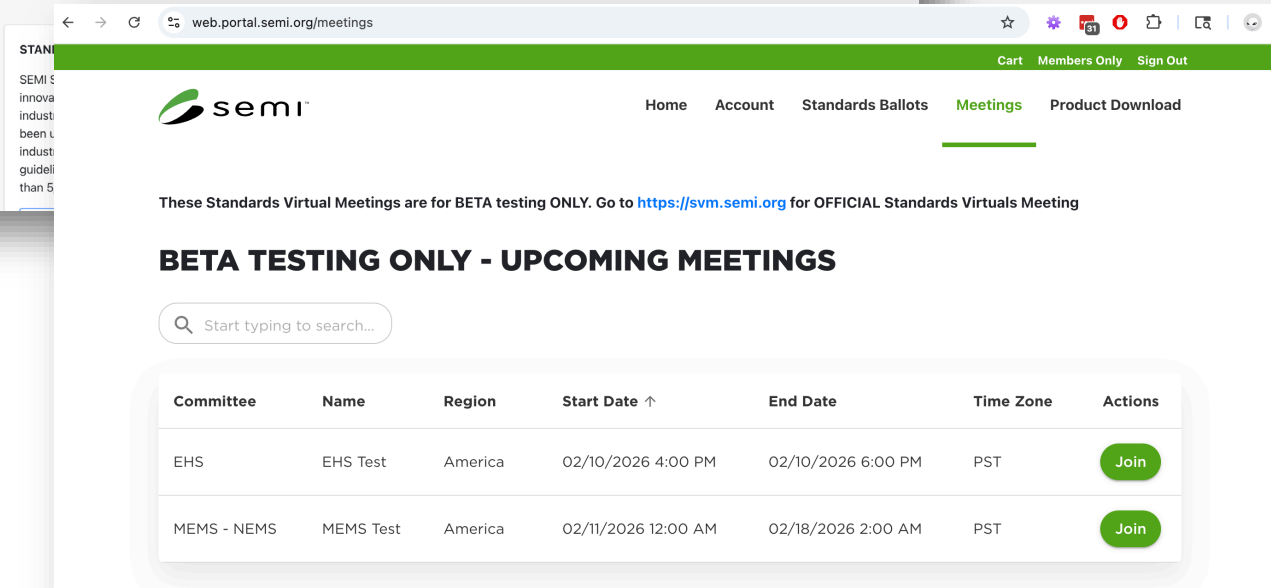
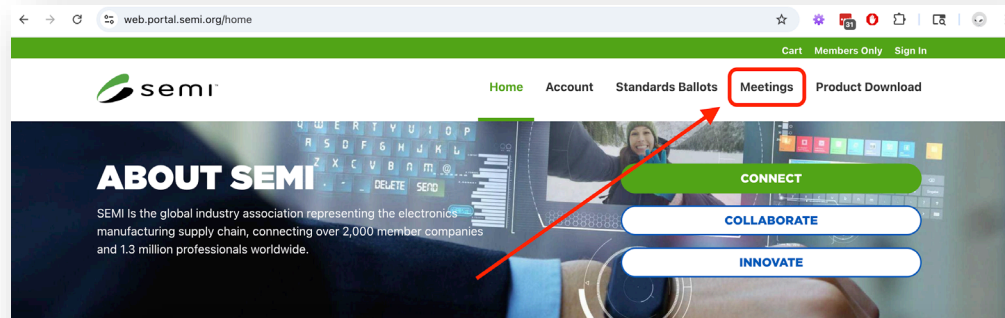
- Acquired Consultant to Rebuild SVM on Ballot Platform November 2025
- Thai leading development team
- HQ Kevin, Laura, Michelle and China Standards Staff supporting
- User Testing – January 2026
- Beta Launch Target – February 2026
- Feedback and Performance Refinement – February to March 2026

SEMI PROJECT TIMELINE



BETA – Standards Virtual Meeting App

<https://web.portal.semi.org/meetings> - Familiar with improvements



Educational Courses under Development

- {Subfab} ***Intro to Sub-fab Course***
 - Objective: Gain a comprehensive understanding of SubFAB operations, including system components, facility layouts, environmental and sustainability considerations, organizational structure, safety and maintenance best practices, and incident-response preparedness within the semiconductor manufacturing ecosystem.
 - Course Date: Early 2026 (2 sessions, EU & Asia friendly)
 - Status: Under development
- Other courses being considered: SECS/GEM, Seals, Cybersecurity

Interested in shaping future educational courses with us? Please reach out to SEMI staff.

Introducing the SEMI University Learning Platform

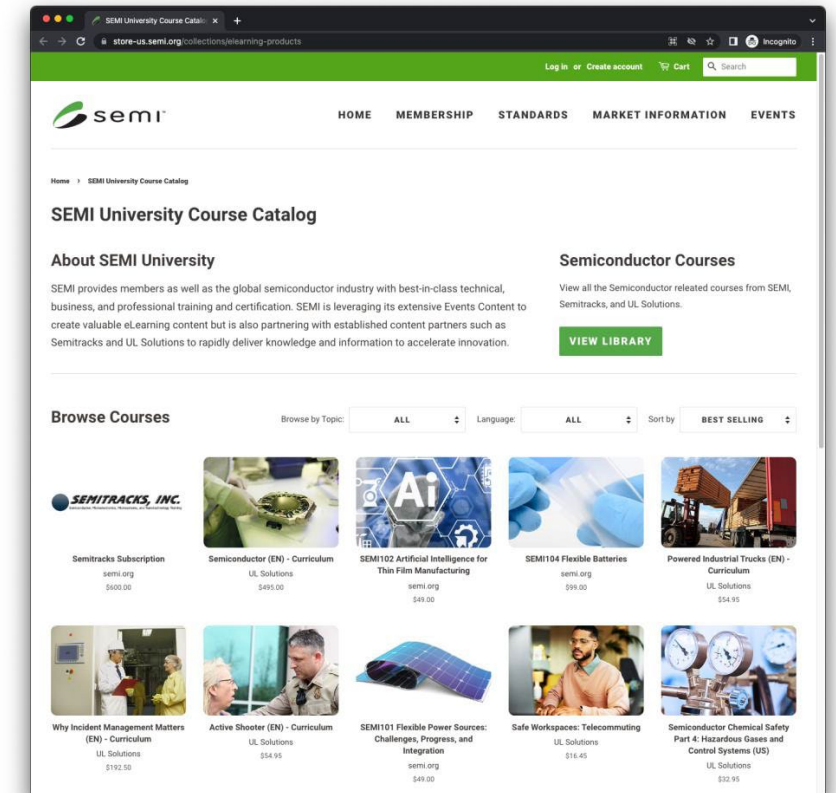
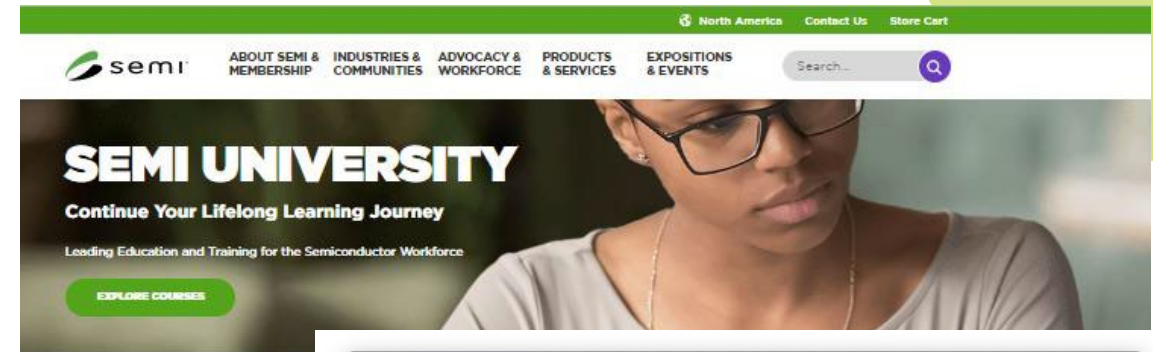


SEMI University is designed for the semiconductor industry by experts

- Targeted to employees ranging from new operators to experienced technicians to non-technical staff
- Semiconductor content, business content and other skills

250+ on-demand courses designed specifically for our industry. Categories include:

- Introduction to Semiconductors
- Advanced Technologies
- AI & Data Techniques
- Safety
- Principles of Design
- Front-end / Back-end Processing
- Test and Characterization
- Robotics



SEMI University

- 250+ online courses
- 7000+ user enrollments from 58 countries
- Employees from 1100+ companies have enrolled in courses



The Canon logo in a bold, red, sans-serif font.

The IBM logo, consisting of the letters "IBM" in a bold, black, sans-serif font with horizontal stripes.

The Sony logo in a bold, blue, sans-serif font.

The KLA+ logo, featuring the letters "KLA" in a purple, sans-serif font followed by a blue square containing a white plus sign, with the tagline "Keep Looking Ahead" in small text below.

The TEL logo in a bold, blue, sans-serif font.

The Microsoft logo, featuring a four-colored square (red, green, blue, yellow) followed by the word "Microsoft" in a black, sans-serif font.



The Amazon logo, featuring the word "amazon" in a black, sans-serif font with a curved orange arrow underneath.

The Micron logo, featuring the word "Micron" in a blue, sans-serif font with a stylized blue and white circular graphic to the left.

The EMD ELECTRONICS logo, featuring the letters "EMD" in a bold, blue, sans-serif font above the word "ELECTRONICS" in a blue, sans-serif font.

The Pfeiffer Vacuum logo, featuring the word "PFEIFFER" in a red, sans-serif font followed by a stylized gray and white graphic and the word "VACUUM" in a black, sans-serif font.

The Intel logo, featuring the word "intel" in a black, sans-serif font with a registered trademark symbol.

The Lam RESEARCH logo, featuring a stylized black and white graphic to the left of the word "Lam" in a black, sans-serif font, with "RESEARCH" in a smaller, black, sans-serif font below.

The Google logo, featuring the word "Google" in its multi-colored, sans-serif font.

The Dupont logo, featuring the word "DUPONT" in a bold, red, sans-serif font with a stylized graphic to the left.

The Cisco logo, featuring a stylized blue and white graphic above the word "cisco" in a blue, sans-serif font.

The ThermoFisher SCIENTIFIC logo, featuring the word "ThermoFisher" in a red, sans-serif font above the word "SCIENTIFIC" in a black, sans-serif font.

The Infineon logo, featuring the word "infineon" in a blue, sans-serif font with a stylized red and white graphic above.

The VAT logo, featuring the letters "VAT" in a bold, green, sans-serif font with the tagline "PASSION. PRECISION. PURITY." in small text below.

The Unimicron logo in a bold, blue, sans-serif font.



The JX Nippon Mining & Metals logo, featuring the text "JX Nippon Mining & Metals" in a black, sans-serif font.



Discount code: SEMIU10

(Applicable to On Demand online courses only!
Not applicable to Virtual or in-person Trainings)

If you have any questions,
please reach out to **Naresh Naik**
nnaik@semi.org

Start your SEMI University journey today!

SEMI JAPAN Original Courses



More courses to come!

Semiconductor Manufacturing Process – Front-End



Semiconductor Manufacturing Process – Back-end



Various Semiconductors



Regulatory



SEMI Standards



Check more details at:

<https://store-jp.semi.org/collections/semi-university>



THANK YOU

STANDARDS